



# Welcome



*We encompass the full spectrum of design led, inspirational furniture from our state of the art facilities. Each individual piece is made with attention to detail and precision, boasting the highest standard of craftsmanship.*

# Contents



<b>Inframe</b> Kitchens	01
<b>Traditional</b> Kitchens	13
<b>True Handleless</b> Kitchens	29
<b>Contemporary</b> Kitchens	39
<b>Internals</b>	51
<b>Finishes</b>	55
<b>Kitchen Door Care &amp; Maintenance</b>	59

# Inframe

kitchens

*Choose from our stunning range of Inframe kitchens to create that high end bespoke feel to off set your living space. Whether you choose a design that incorporates one colour for a refined statement, or a mix and match of different colours for a more individual look, the choice is yours.*





# Calgary



*If you are looking for the ultimate ‘wow’ factor, the Calgary & Victoria may just be the answer.*

An entertainer’s dream, with its spacious work area, large central island with raised glass breakfast bar and underground spiral wine cellar, this kitchen simply cannot be matched for style and originality.

The Island features quadrant doors with an abundant number of drawers in varying sizes to provide ample storage while the wall units incorporate Damascus carved frames for displaying favourite glasses and crockery. Unique s-shaped doors provide focus on the sink area and a fluted high cornice tops off the overall look, resulting in a living space that is beyond exceptional.



1 Calgary kitchen featuring Walnut (wall & base units) and Victoria painted Brilliant White (island).



# Peterborough



*A sublime example of 'old meets new', this Peterborough and Montreal combination will attract admirers from both sides of the fence with its modern, monochromatic look, enhanced by the magnificent rustic central island.*

The Peterborough door, with its unique chamfered appearance, adorns the surrounding wall and base units and is punctuated by various accessories ranging from a contemporary style overmantle flanked by 'secret' open shelving to inset oak chopping boards. The mirrored glass used in the Georgian frames adds to the room's overall modern appeal. Added texture and warmth is provided by the island's prominent sandblasted Oak finish, which is then topped off by a slate worktop.



1 Peterborough kitchen painted Gun Metal Grey (wall & base units on left, dresser) and Brilliant White (wall & base units at rear) with Oak inset trays. Montreal island has a sandblasted Character Oak finish.



# Quebec



*Offering a fresh approach to an established favourite, Quebec's shaker style door with small chamfered profile sits impeccably well in this uncomplicated yet chic kitchen design.*

The sleek minimal styling, best shown in the linear display of wall & base units and the overmantle crowning the range cooker, is definitely for those who really appreciate a simple cutting-edge look.

The island is specially constructed using floor frames that give the appearance of individual cabinets sitting side by side and, the absence of mid rails between the drawers, ensures maximum use of storage space. Solid Oak inset trays, cutting boards and an internal spice drawer contribute further attractive and functional elements to the design.



1 Quebec kitchen painted Lava with Oak pull out trays and chopping boards.



# Sudbury & Hudson



PAINT TO  
ORDER



COLOUR MATCH  
SERVICE



MADE TO  
ORDER

*With inspiration drawn from contemporary rural living, simplicity reigns supreme in this sophisticated and dramatic kitchen design. With prominent ceiling beams hovering high above a significant open space, the architectural layout of this room lends itself perfectly to the integration of a contemporary design aesthetic.*



1

Bringing together the varied tones of American Black Walnut (Sudbury) and painted Stone (Hudson), this kitchen features not one, but two islands, each providing an important functional contribution to this stunning design.

The soft curves presented by the quadrant doors in both islands are subtly reflected in the tall housings opposite by the inclusion of radiused pilasters and a bowfronted tall larder, and designer worktops add to the luxurious look and feel.

1 Sudbury Kitchen in Walnut (islands) and Hudson Painted Stone (wall & base units, tall housings).





# Toronto



*A kitchen designed for comfortable living, Toronto uses soft pastel colours to accentuate fine details and cosy furnishings, ideal for socialising with friends and family.*



With its ethereal feel brought about by the combination of Light Blue and Ivory painted finishes, the Toronto kitchen brings new meaning to the phrase 'easy living'. Focussed on creating a comfortable and relaxed living space, the bench seating presents an inviting area for friends and family to group together and discuss the events of the day whilst enjoying a good meal.

Designed also for a practical lifestyle, the island includes convenient shelving for easy access to cookbooks and a circular end unit for all important food preparation.

1 Toronto kitchen painted White Cotton (wall & base units, island) and Light Blue (barrel unit, bench seating).





# Traditional kitchens

*Everything about a traditional kitchen is warm and welcoming. Design trends will come and go but traditional kitchens will always remain a firm favourite. Available in a variety of different styles, colours and accessories, you can achieve something truly special.*



# Aldana

The stunning simplicity of the Aldana shaker-style door is accentuated by its narrow frame for a decidedly modern look.

EX

EXPRESS COLOUR

PTO

PAINT TO ORDER

CMS

COLOUR MATCH SERVICE

MTO

MADE TO ORDER

EXPRESS COLOURS

IVORY

MUSSEL

LIGHT GREY

STONE

DUST GREY



This door is accompanied by a host of accessories that will expand your design options and create a kitchen that meets all your expectations.

- 1 Aldana kitchen painted Ivory and dresser painted Airforce. Worktops are Dekton Valterra Ultra Compact (island) and Dekton Tundra Ultra Compact (base units and dresser).
- 2 Dresser displaying plain glazed frames and acute angled cornice. Also shows beautiful end panels on the wall and base, created with pilasters and feature plinth.



- 3 Aldana kitchen painted Deep Heather and Lavendar Grey. Worktop is Silestone Eternal Charcoal Soapstone quartz on island and Silestone Eternal Serena quartz on back run. Also shows suspended island supported by chunky posts.
- 4 Feature end panels provide a finishing touch to wall and base units. Also shows plain glazed frames.
- 5 Bring your kitchen colours to other parts of your home such as the utility area.





# Florence

EX

EXPRESS COLOUR

PTO

PAINT TO ORDER

CMS

COLOUR MATCH SERVICE

EXPRESS COLOURS

PORCELAIN

MUSSEL

LIGHT GREY

STONE

DUST GREY

GRAPHITE



3 Florence kitchen painted Dust Grey and Porcelain. Worktops are solid oak (island) and Kensho Quartz (back run). Also shows central island/pastry bench.

*Traditionally known for its classic style, the Florence door, with its internal bead, exposes its lively side with the addition of a vibrant colour mix.*

Adorned with key features such as an ornate overmantle and oak open shelving this kitchen maintains its time-honoured appeal whilst boasting eclectic charm.

- 1 Florence kitchen painted Deep Heather and Viridian. Worktop is Moorland Fog Quartz on base units and solid oak on island. Island features double door end panel and underplinth.
- 2 Dresser with oak open shelving flanked by door/drawer combination. Also shows application of pilasters throughout kitchen design for an overall freestanding look.





# Georgia

Feeling right at home in a roomy environment, the Georgia kitchen shines with an abundance of colour and style.

EX

EXPRESS COLOUR

PTO

PAINT TO ORDER

CMS

COLOUR MATCH SERVICE

PORCELAIN

MUSSEL

LIGHT GREY

STONE

DUST GREY

GRAPHITE



The commanding central island becomes a focal point when highlighted by a surrounding geometric tile design and copious amounts of light are provided by overhead skylight windows.

- 1 Georgia kitchen painted Airforce. Worktop is Silestone Eternal Statuario quartz. Also shows open shelving unit in Parched Oak and mantle shelf.
- 2 Island with integrated open shelving.



- 3 Georgia kitchen painted Stone and Porcelain. Worktop is Marble Carrara. Also shows open wall unit with plate rack, worktop dresser with plain glazed frames and feature overmantle.
- 4 Unique island design incorporating curved doors, plain glazed frames, chunky pilasters and underplinth.



# Jefferson

EX

EXPRESS COLOUR

PTO

PAINT TO ORDER

CMS

COLOUR MATCH SERVICE

MTO

MADE TO ORDER

EXPRESS COLOURS

IVORY

MUSSEL

LIGHT GREY

SAGE GREEN

STONE



The quintessentially traditional design of the Jefferson door, with its raised centre panel and defined grain painted finish, exudes charm and sophistication.

Choose from an extensive selection of both standard and made to order accessories to devise a kitchen that is totally unique and special.

- 1 Jefferson kitchen painted Shell and Marine. Worktop is Iconic White Quartz with integrated solid oak chopping board. Island features curved pilasters for a softer look and dresser on back wall boasts double glazed feature frames.
- 2 Stylish bowfront pan drawers for maximum storage capability.



- 3 Jefferson kitchen painted Light Grey and Gun Metal Grey. Worktop is Honed Marble.
- 4 Pastry bench with solid oak slatted base shelf and worktop.
- 5 Worktop dresser featuring Edwardian carved frames.



# Kensington

*The innovative Kensington design with sloped internal profile and prominent v-grooves offers a contemporary twist on the original shaker style door.*

EX

EXPRESS COLOUR

PTO

PAINT TO ORDER

CMS

COLOUR MATCH SERVICE

EXPRESS COLOURS

PORCELAIN

IVORY

MUSSEL

LIGHT GREY

DUST GREY



Available in numerous colours, the visible grain on this versatile door provides a look of true authenticity.

1 Kensington kitchen in Light Grey. Worktop is Bardiglio Nuvolato Marble. Also shows island with open shelving and back run incorporating tall plain glazed frames.



2 Kensington kitchen in Mussel and painted Lava. Worktop is Bianco Carrara Marble. Also shows window bench seating, slim mantle shelf design and modern square cornice.





# Madison

EX

EXPRESS  
COLOUR

PTO

PAINT TO  
ORDER

CMS

COLOUR MATCH  
SERVICE

MTO

MADE TO  
ORDER

EXPRESS COLOURS



IVORY



MUSSEL



LIGHT GREY



SAGE GREEN



STONE



DUST GREY



1

*Effortlessly chic and stylish, the Madison shaker door with v-groove makes an impressive statement with its simple detailing and selection of accompanying designer accessories.*

Classic in both function and form Madison will fit happily into any sized space to bring you a kitchen that works hard and looks fabulous.

- 1 Madison kitchen painted Cashmere and Graphite. Worktop is Silestone White Storm quartz. Also shows tall unit with small glazed frames.
- 2 Central island with feature door end panel and skirting plinth, and solid oak inset trays and chopping boards.



2



3

- 3 Madison kitchen painted Marine and Light Teal. Worktop is Silestone Iconic White quartz.
- 4 Maximise your kitchen space by including a recessed tall appliance housing unit.
- 5 Dresser top with Georgian frames.



4



5



# Wakefield

The internal bead profile detail used in the Wakefield door adds extra depth and contour to your overall kitchen design when combined with any of the broad number of accessories on offer in this stunning range.

EX

EXPRESS COLOUR

PTO

PAINT TO ORDER

CMS

COLOUR MATCH SERVICE

MTO

MADE TO ORDER

EXPRESS COLOURS



IVORY



MUSSEL



LIGHT GREY



SAGE GREEN



STONE



DUST GREY



Take advantage of the extensive painted colour palette which allows you to mix and match with total freedom.

- 1 Wakefield kitchen painted Mussel and Parisian Blue. Worktop on back run is Silestone Blanco Maple quartz and solid oak on island. Also shows simple overmantle design and central island with feature door end panel.
- 2 Dresser with double glazed feature doors and oak open shelving.



- 3 Wakefield kitchen painted Ivory, Stone and Lava. Worktop is Bianco Carrara Marble.
- 4 Tall appliance housing with traditional high cornice.
- 5 Small glazed feature frames.





# True Handleless

kitchens

*The true handleless door style offers an understated minimal streamlined look becoming the design of choice. Available in a range of finishes, true handleless can be easily adapted to accommodate any space.*





# Zola Gloss

*Visually stunning as well as virtually indestructible, Zola Gloss provides a mirror-like finish that will complement any space it occupies.*

EX

EXPRESS  
COLOUR

EXPRESS COLOURS



WHITE



PORCELAIN



IVORY



LIGHT GREY



CASHMERE



DUST GREY



GRAPHITE



A sense of balance is achieved with contrasting colours and finishes and an open plan room design allows for plenty of free movement around the kitchen.

1 Zola Gloss Dust Grey featuring handleless rail system. Cashmere wall units shows how different colours work together to provide stunning results.



2 Zola Gloss in Porcelain and Graphite. Worktops are Lyra Quartz (back run) and Negro Anubis Quartz (island). Also shows handleless rail system with aluminium finish and designer breakfast bar.





# Zola and Ferro

Zola

PTO

PAINT TO ORDER

CMS

COLOUR MATCH SERVICE

Ferro

PTO

PAINT TO ORDER

MTO

MADE TO ORDER



*Push the limits of your imagination with the combined appeal of Zola Matte Painted and Ferro. Displaying a mesmerising colour mix of smooth brass and striking blue, this kitchen shows that a simple slab door construction does not have to be boring.*

Exposed brick walls, modern patio door frames and dark timber elements enhance its personality.

- 1 Zola painted dark blue (using Colour Match Service) and Ferro painted Brass. Worktop is Carbono Quartz.
- 2 Handleless rail system painted Graphite provides a clean, streamlined look.

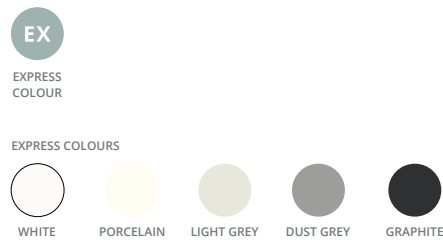


- 3 L-shaped island with dark timber breakfast bar.



# Zola Soft-Matte

*The adaptability of Zola's Soft-Matte slab design allows for a range of possibilities when it comes to devising your statement kitchen.*



Darker shades for matte kitchens are hot on trend with the integrated linear pull handle giving a minimalist look.



1 Zola Soft-Matte Light Grey and Graphite. Worktops are Silestone Lagoon quartz (back run) and Silestone Eternal Emperador quartz (island). Also shows handleless rail system with aluminium finish.



2 Zola Soft-Matte in White. Worktop is Silestone Niebla quartz. Shows handleless rail system with aluminium finish.  
3 An interesting door and drawer configuration adds an exciting element to this simple design.





# Ferro & Rezana

Ferro



PAINT TO ORDER



MADE TO ORDER

Rezana



STAIN TO ORDER



MADE TO ORDER



- 1 Rezana stained Carbon Oak and Ferro painted Iron. Worktop is Dekton Orix Ultra Compact. Also shows custom designed vessel to hold potted herbs.
- 2 The iron finish of Ferro sits comfortably alongside Rezana's dark timber.
- 3 Pan drawers showing solid oak secret cutlery drawer with dovetail joints and inconspicuously positioned matte black handles.



*A true representation of the urban dream, this mix of Rezana's rich real wood veneer and Ferro's cool iron paint finish work to create an exciting habitat for lovers of the 'industrial' look.*

This minimalist kitchen loft design is offset nicely by signatures of the industrial style such as exposed brickwork and piping and is given a touch of vibrancy with the inclusion of an interior herb garden.





# Contemporary

kitchens

*Be inspired by our range of contemporary style kitchens choosing from the best finishes, materials and accessories. With our minimalist cabinetry and selective colour palettes, the contemporary kitchen has a subtle elegance that will never go out of style. A popular style of kitchen where less is definitely more.*





# Strada Gloss

*Make the ultimate contemporary style statement with the chic, handleless doors of Strada Gloss. A high quality product with an exceptionally flawless, mirror-like finish, you can use internal and external curves to create a high-end, stylish kitchen.*

EX

EXPRESS COLOUR

EXPRESS COLOURS



WHITE



PORCELAIN



IVORY



LIGHT GREY



CASHMERE



DUST GREY



GRAPHITE



If you find yourself struggling for space, why not work tallhousing units into your design? This creates added storage capacity and more room in your kitchen. Integrated appliances work great too.

1 Strada Gloss kitchen in Porcelain and Graphite. Worktop is Blanco Stellar Quartz. Wall units adorned by letterbox feature frames.



2 Strada Gloss in White and Aldana painted vivid green (using our Colour Match Service). Worktop is Keon Quartz. The Aldana freestanding larder unit with painted ash grain finish makes itself at home beside Strada's gloss cabinets.



# Strada Matte

EX

EXPRESS COLOUR

PTO

PAINT TO ORDER

CMS

COLOUR MATCH SERVICE

EXPRESS COLOURS

WHITE

PORCELAIN

MUSSEL

LIGHT GREY

STONE

DUST GREY

GRAPHITE



1

*Strada's cutting-edge door with integrated J-handle perfectly accommodates a blend of daring colour and rudimentary styling.*

A kitchen created for those who appreciate minimalism, it offers both efficiency and luxury in one, and is brought to life by the inclusion of sleek appliances, brightly coloured decorative elements such as crockery and strategic lighting.

- 1 Strada kitchen painted Deep Forest. Worktop is Black Noir Quartz. Create the ultimate contemporary look by replacing wall units with floating shelves that house recessed spot lights.
- 2 Use a shark's nose profile on your island worktop to tie in with the overall angular look of the kitchen design.



2



3 Strada Matte painted White and Graphite. Worktop is Iconic White Quartz.



3



# Tavola

PTO  
PAINT TO  
ORDER

CMS  
COLOUR MATCH  
SERVICE

STO  
STAIN TO  
ORDER



1

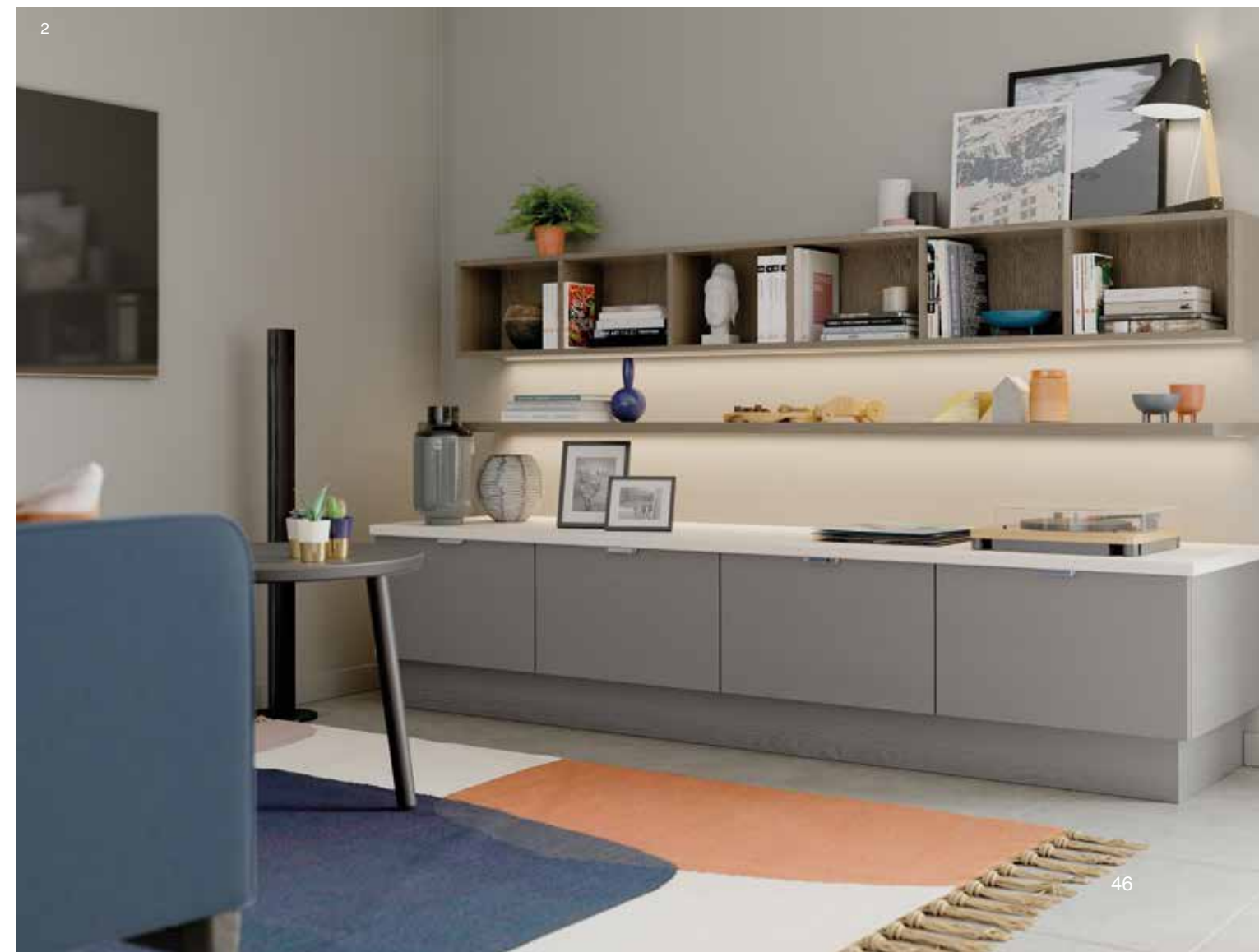
*Tavola in real wood veneer brings a trio of complementary finishes together in this rectilinear kitchen design. Floor to ceiling units are cleverly used to maximise storage capacity and extensive open shelving creates a feeling of spaciousness.*

The inclusion of a compact island provides a useful eating and food preparation area.

- 1 Tavola painted Shell and Dust Grey and stained Weathered Silver Oak. Compact island with raised breakfast bar shelf and cubby hole storage.
- 2 Low level cabinets and floating open shelving create a focal point in the living room.



2





# Zola Gloss

*The ever popular industrial look that embraces key design aspects such as interior brickwork, concrete and exposed pipes and ceiling beams, allows Zola to sit unassumingly alongside, encouraging comfortable living.*

EX

EXPRESS  
COLOUR

EXPRESS COLOURS



WHITE



PORCELAIN



IVORY



LIGHT GREY



CASHMERE



DUST GREY



GRAPHITE



Open shelving allows you to display special items in plain view and with easy access. A great way to show off all your most treasured kitchen items.

1 Zola Gloss in White and Light Grey. Worktops are White Marble and Solid Oak. Also shows dual level island creating ample seating space.



2 Zola Gloss in Dust Grey. Worktop is Snowy Ibiza Quartz.  
3 Create perfect symmetry with the positioning of your kitchen cabinets.





# Zola Soft-Matte

*Its strikingly simple design coupled with its super smooth finish makes Zola Soft-Matte the perfect choice for those wishing to achieve that high end designer look.*

EX

EXPRESS  
COLOUR

EXPRESS COLOURS



WHITE



PORCELAIN



LIGHT GREY



DUST GREY



GRAPHITE



Create a style statement from a choice of five chic shades.

- 1 Zola Soft-Matte kitchen painted Dust Grey.
- 2 Add the finishing touch to your trendy kitchen with a contemporary style handle such as the one shown here on the Zola Soft-Matte Dust Grey range.



- 3 Tall housing units and integrated wall appliances can work perfectly to create more space in your kitchen.



# | Internals

*Add an extra dimension to your kitchen with the inclusion of clever and convenient internal storage.*

Ranging from cutlery inserts and spice drawers to larger pantry units and larders, you can completely transform the way your kitchen operates by creating organised areas that allow you to locate everything you need easily.

## Drawers



Double deep pan drawers cleverly hide a secret cutlery drawer within, maximising use of space. All drawer internals are crafted from oak and feature dovetail construction.



Bespoke cutlery insert trays will organise your utensils to ensure everything you need is at hand.



Deep pan drawers allow you to arrange pots and pans so that they are readily accessible.



This tray set features a handy spice drawer with dovetailed construction above a framed solid oak tray (right).



Larders



1 This stunning larder has a place for everything and features spice racks on both doors, scalloped edge drawers and plenty of open shelving.  
2 Custom-made walnut nespresso dovetail drawer box.

Dressers



3 Larder unit with wine glass holder, wine rack, and specialised scalloped edge drawers that allow you to view contents easily.  
4 Dresser featuring internal bar with wine glass holder, wine rack and antique mirrored glass back panel.

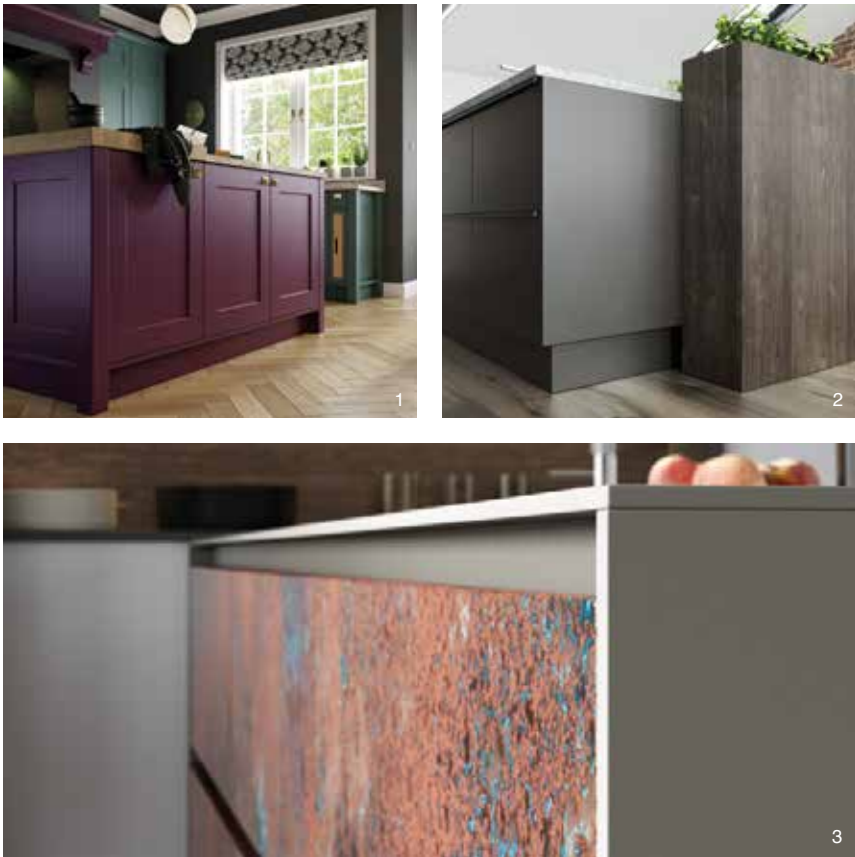


# Finishes

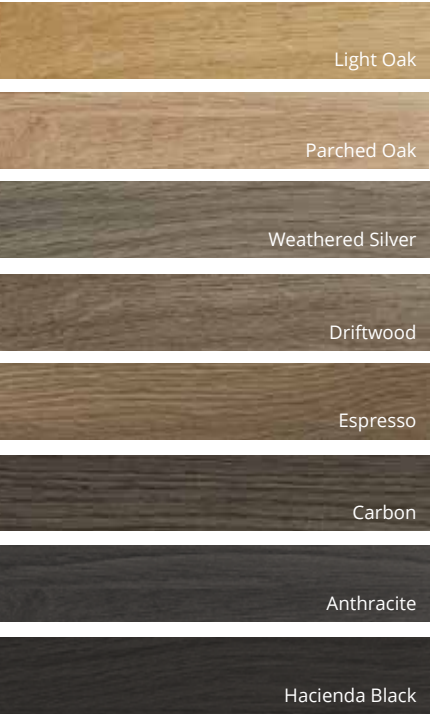
Whether you opt for painted or stained we have a wide selection of colours and finishes to offer, with a view to designing your ultimate kitchen.

As well as having our standard painted and stained finishes we also use specialised techniques to produce a highly unique range of metal paints that when used as a focal feature will set your kitchen design well apart from the rest.

- 1 Florence painted Deep Heather and Viridian.
- 2 Rezana stained Carbon and Ferro painted Iron.
- 3 Ferro in Oxidised Copper.



## STAIN PALETTE



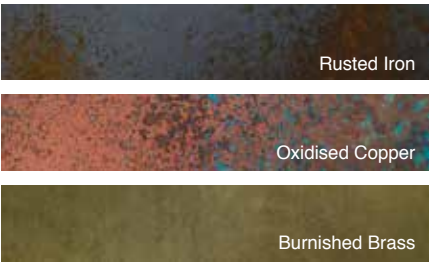
Stains can be applied to Rezana and Tavola only.

## FERRO PALETTE

Smooth Metal Finish



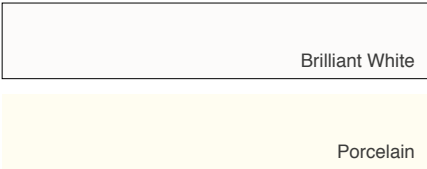
Weathered Metal Finish



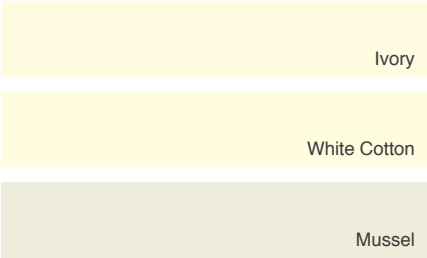
Metal paints can be applied to Ferro only.

## STANDARD PAINT PALETTE

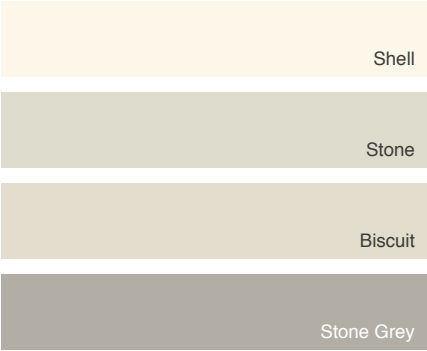
Whites



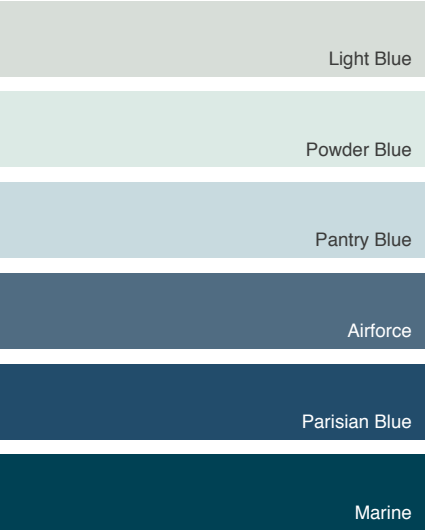
Creams



Beiges



Blues



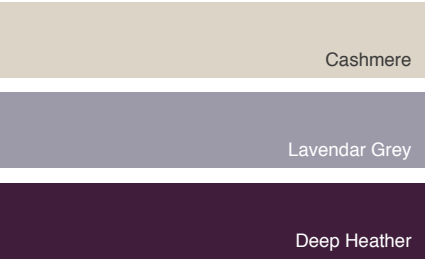
Greens



Greys



Purples



Standard paint colours can be applied to: Aldana, Florence, Georgia, Jefferson, Kensington, Madison, Strada Matte, Tavola, Wakefield and Zola Matte.

This document is intended only as a guide and, as no picture can accurately convey colour representation it is suggested you examine our products personally before purchase. Only then can you appreciate the detail of each and every component, the finishes applied and the superior quality. If your chosen finish is not on display, we recommend that you order a sample.





## PAINTED TO ORDER

PTO

We offer a selection of 27 paint colours in a variety of hues that are applicable to Aldana, Florence, Georgia, Jefferson, Kensington, Madison, Strada Matte, Tavola, Wakefield and Zola Matte.

You can request that your kitchen be painted in any number or combination of these colours. For some ranges you will see that they are also available in a selection of Express Colours. These are colours that are popular and therefore we use them to pre-finish a number of our kitchens and make them available in a shorter amount of time.



## COLOUR MATCH SERVICE

CMS

Choose that 'specific' colour you have been longing after using our Colour Match Service. It's as easy as you providing a RAL (European Standard) or BS (British Standard) colour reference and we will match it.

Applies to Aldana, Florence, Georgia, Jefferson, Kensington, Madison, Strada Matte, Tavola, Wakefield and Zola Matte.



## STAINED TO ORDER

STO

We offer a selection of 8 stains in a variety of hues that are applicable to Rezana and Tavola.

You can request that your kitchen be stained in any number or combination of these colours. Depending on the grain structure of your chosen door there will be variations in colour from range to range. For instance, Rezana has a more defined grain structure and therefore may display stain colours in a deeper shade.



## MADE TO ORDER

MTO

Our made to order products are available to those customers who desire alternative sizes or designer features to create a bespoke kitchen.

Applies to Aldana, Ferro, Jefferson, Madison, Rezana and Wakefield.

- 1 Strada Matte painted Porcelain, an Express Colour.
- 2 Aldana painted pale yellow using our Colour Match Service.
- 3 Rezana stained Carbon Oak, stained to order.
- 4 Jefferson featuring made to order bowfront drawers.



# Kitchen Door Care & Maintenance

With the appropriate care and maintenance our kitchen doors and components are designed to provide many years of reliable service. To help keep it in the best possible condition please follow the simple guidelines below.

## INSTALLATION ADVICE

### Pre Installation

Ensure that all new-builds or newly plastered rooms have been left to environmentally stabilise prior to the installation of new kitchen doors. Kitchen doors must not be installed into a damp, or moisture-rich environment as it will cause undesirable movement in the joints and panels of the door. A hygrometer should be used to assess conditions.

To help minimise any potential damage to the kitchen whilst you are installing it, please read and adhere to the following instructions and recommendations:

- We would advise that you make an initial check to confirm that you have the correct quantity and sizes of fascias; you can do this by referring to the labels attached to the outer packaging.
- The fascias should be stored flat and away from the working area. Take extreme care when stacking the fascias with hinges attached to ensure that the hinges do not mark other fascias. Do not lean the fascias against one another, or against any surface without proper protection in-between.
- Ensure that you fully inspect each individual fascia prior to attaching the hinges. Claims for damage to the fascia will not be accepted after the hinges have been attached.
- Take extreme care when unpacking the fascias and do not use sharp blades to cut away the packaging.
- When attaching the hinges, place the fascia face down on a soft clean surface, ensuring that there is no grit, sawdust or other matter underneath that could damage the surface of the fascia whilst the hinges are attached. It is good practice to place a sheet of clean cardboard between the fascia and the flat surface prior to attaching the hinges.
- If the hinges are 'knock-in' type, use a rubber mallet to knock the hinges into the fascia without using excessive force.
- Once the hinges have been attached to a door, hang the door on the unit straight away to avoid damage. Do not stack the doors with the hinges touching other doors, as this can cause scratches or marks to the other fascias.
- Do not stack the doors on their ends on any hard surface; this can cause chipping and scratching along the edge of the fascia, especially on the handle edge of ranges with an integral handle. Prior to fitting, the fascias should be stored flat, ensuring that they are not resting on any dirt or debris that may damage or mark the finish.
- You should take extreme care not to put the door down with excessive force on any edge, especially the handle edge, as this will cause crushing/impact damage on these edges.
- Take extreme care not to put the door down on any hard or rough surface such as bare concrete floors, or on any debris such as sawdust, grit or screws, as this can damage the product.
- If the fascias are attached to the carcass, then you should carefully remove the fascias by unclipping the hinges, and storing these flat in a clean safe environment away from your working area, utilising the packing materials from the units.

- Where cutting/scribing décor panels and trim, you must use a sharp quality saw blade of the appropriate grade for fine-cutting, or a suitable router. Small chips can appear along the cut-edge, and so extra care must be taken to minimise the risk of chipping. Using a blunt or inappropriate saw blade will produce a poor finish, and this will not be covered by the guarantee.
- *On Painted Products:* Any fine chips along the cut edge should be smoothed with a fine grade sand paper prior to fitting.
- All cut edges should be sealed against moisture ingress using a suitable water resistant sealant/adhesive prior to installation.
- All trims are supplied in long lengths and need to be cut down on site, and again it is important that this is done using the appropriate tools.
- When fitting the plinth, ensure that you check the dimensions of any adjacent appliances. On occasion, the plinth may need to be pulled forward to ensure that it clears the front of the appliance. This can be achieved by fitting blocks using off-cuts to the rear of the plinth prior to attaching the plinth clips, to step the plinth forward from its normal position.

### General Care

As with all kitchen furniture the most common problems found occur as a result of excessive or prolonged exposure to heat and/or moisture. Always ensure that water is not left around sink areas as damage caused as a result is not covered by the guarantee.

Always wipe off excess moisture and be careful with extreme heat sources, such as kettles, ovens and toasters. It is recommended that these heat sources are not placed directly under wall units when they are in use; they generate a higher level of heat and moisture than is often appreciated and can quickly and easily lead to damage of the furniture.

Don't place appliances that create steam (e.g. steamer, coffee maker or kettle) underneath the cabinets so that the steam flows up against the underside of the cabinet and doors.

If using glass cleaner to clean your glass doors be careful not to damage the finish of the door and cabinet parts while cleaning. Do not spray glass cleaner directly on to the glass or cabinet parts as this may discolour the finish of your kitchen cabinets. Instead, spray a small amount of cleaner on to a lint free cloth or paper towel then wipe the glass.

Don't open the door of the dishwasher immediately after the programme has ended, as exposure to heat and the high humidity increases the risk that the door may absorb moisture and swell.

Please note that after a period of time it is quite normal for the colouring of kitchen units to mellow in colour. This is not a manufacturing fault and is as a result of exposure to light. This means that any additional parts subsequently ordered for your kitchen, or supplied as replacements may not be an exact colour match. However any additional parts supplied will also mellow over time to blend with your existing units.

The colour of doors and drawer fronts may appear mismatched in colour. This apparent mismatch is sometimes the effect of differing light conditions within your kitchen, (known as metamerism). To check your doors and fascia you should place them side by side in natural daylight for comparison.

### Cleaning advice for all door types including timber, painted & foil

- Do not use wax-furniture polish, abrasive or aggressive cleaners, bleach or other hypochlorite (chlorine) based cleaners, multipurpose cleaners, dilutes, acetone, alcohol, solvent or similar products on the door, as this will damage the surface; additionally wax and polishes leave a residue build up that is difficult to remove.
- Only use a 5% soap, 95% water (liquid soap) solution, wiping with a damp (not wet) cloth, finally drying with a soft clean cloth.
- Ensure all cooking splashes are wiped immediately with a damp cloth; and dust with a soft cloth only.
- Never use any abrasive pads or abrasive cleaners on the furniture. Spills and condensation on the fascias/panels should be cleaned and dried immediately.

### Timber & Veneered Doors

*Cleaning:* when cleaning timber doors you must follow the pattern of the grain. It is advisable to use a damp (not wet) cloth to remove fingerprints and marks, followed at once with a clean and dry soft cloth.

*Moisture:* excess moisture can damage a timber product - it is recommended that susceptible areas such as around the sink are thoroughly maintained and kept dry at all times.

*Light:* timber changes colour when exposed to light. Light, lacquered surfaces also have a certain tendency to "yellow with age" depending on the exposure to light. The species of timber and intensity of exposure will affect the rate of change. Due to this we recommend that timber samples be changed regularly.

It is advised that colour change is taken into consideration when replacing or fitting new doors some time after the original kitchen has been installed.

### Foil & High Gloss Finished Doors

Foil/Lacquer coated products are manufactured from the highest quality materials. Please be careful not to puncture the foil/melamine lacquered surface of your panels. These should be kept dry in order to prevent moisture ingress.

Your gloss doors will come with a protective film over the front. You should remove this only after they are installed as the curing process continues for around 72 hours after the film is removed. This means the doors will be liable to scratching and other marks. You should avoid cleaning the doors for at least a few days to prevent any marks appearing on the surface.

You should clean the doors with a soft damp cloth and a mild detergent. Never use any harsh or abrasive cleaners as this may damage the gloss surface of the door. Normal cleaning and polishing may leave minor scratches on the surface of the door, which is quite natural.

*Moisture:* Periodically clean the interior and exterior surfaces of the door using a soft, damp cloth. Wipe dry all surfaces after cleaning.

Use only cleaning agents that are intended for the materials used in your kitchen. Avoid any agents that contain ammonia, alcohol, bleach or an abrasive.

If the surface of the product is exposed to any oil based substance (for example olive oil, butter, margarine or cooking oil), the spillage

must be wiped away immediately to prevent staining. Grease marks caused by these oil-based products can easily be removed by use of a mild detergent, non-abrasive cleaner if used immediately after spillage has happened.

Abrasive cleaners are not recommended for this type of product. Do not expose the doors or panels to a temperature in excess of 60°C (140°F) (Approximately the temperature of washing up water).

*Light:* If the doors are supplied with a protective film on the face they must not be directly exposed to sunlight. Once installation is complete, carefully remove the protective film from the front of the fascia. We also advise that colour change is taken into consideration when replacing or fitting new doors some time after the original kitchen has been installed.

### Painted Doors

*Cleaning:* it is advisable to use a damp (not wet) cloth to remove fingerprints and marks, followed at once with a clean and dry soft cloth. Any form of furniture polish or other cleaning products should be avoided.

*Light:* painted finishes will change colour when exposed to light - the intensity of exposure will affect the rate of change. Any colour samples and door samples provided should be used as a guide only and due to certain variables, may not provide an exact match to the finished painted product.

We also advise that colour change is taken into consideration when replacing or fitting new doors some time after the original kitchen has been installed.





22-24 Chipstead Valley Rd  
Coulsdon  
Surrey  
CR5 2RA

**T** 020 8660 9287  
**F** 020 8763 9600  
**E** [sales@coulsdonhomehardware.co.uk](mailto:sales@coulsdonhomehardware.co.uk)  
[www.coulsdonhomehardware.co.uk](http://www.coulsdonhomehardware.co.uk)